

## Press Release

### The updates on COVID-19 in Korea as of 10 May

Date 2020-05-10 17:03 Update 2020-05-10 17:03 Division Division of Risk assessment and International cooperation Tel 043-719-7556

☎ 3,479

#### The Updates of COVID-19 in Republic of Korea 10 May, 2020

○ As of 0:00, 10 May 2020, the total number of confirmed cases is 10,874 (including 1,127 imported cases), of which 9,610 cases have been discharged from isolation. Newly confirmed cases are 34 in total.

[Table 1. Total reported/tested cases]

Period (since 3 Jan)	Total	Tested positive (PCR)				Testing in progress	Tested negative (PCR)
		Confirmed	Discharged from isolation	Underisolation	Deceased		
As of 0:00 9 May (Sat)	660,030	10,840	9,568	1,016	256	9,153	640,037
As of 0:00 10 May (Sun)	663,886	10,874	9,610	1,008	256	10,128	642,884
Difference	(+)3,856	(+)34	(+)42	(-)8	0	(+)975	(+)2,847

[Table 2. Imported cases in Korea (as of 0:00, 10 May 2020)]

	Total	Region/Country						Where confirmed		Nationality	
		China	Asia ex- China	Europe	Americas	Africa	Australia	Point of Entry	Community	Korean	Other
New	8	0	2	1	2	3	0	6	2	7	1
Total	1,127	19 (1.7%)	154 (13.7%)	462 (41.0%)	485 (43.0%)	6 (0.5%)	1 (0.1%)	476 (42.2%)	651 (57.8%)	1,018 (90.3%)	109 (9.7%)

\* Figures may change based on findings from ongoing local epidemiological investigation efforts.

○ In addition to the continuous importation of cases from Europe and Americas, the number of imported cases from Middle East and Africa has also increased recently. Therefore, entry screening procedure will be strengthened once again. Currently, incoming travelers from abroad other than the United States and Europe get tested only when they have symptoms while those from the United States and Europe get tested within 3 days of their arrival. According to the strengthened procedure, however, every inbound traveler should get tested within 14 days upon their arrival regardless of symptoms.

○ With regard to local transmission, 26 additional cases have been confirmed, of which 24 were identified from the investigation on Itaewon club cases (18 = a visit history to the clubs, 6 = contacts) and 2 were sporadic cases in Daegu City.

\* As of 12:00, May 10, 11 more cases have been confirmed in relation to Itaewon clubs, bringing the total number of cases to 54. (Regional distribution : 30 = Seoul, 14 = Gyeonggi, 6 = Incheon, 2 = Chungbuk, 1 = Busan, 1 = Jeju / Distribution by chain of transmission : 43 = a visit history to the club, 11 = contacts including family and co-workers)

○ KCDC noted that anyone who visited clubs in Itaewon District (in Yongsan-gu, Seoul) from the end of April to 6 May are likely to have been exposed to the virus. KCDC asked these people to:

- (1) Stay home.
- (2) Contact a local public health center or dial 1339 (KCDC call center) and follow the instructions of the public health center.

○ KCDC also asked local health authority and healthcare facilities to check a contact or visit history of patients and conduct a diagnostic test for COVID-19 regardless of symptoms when necessary.

○ Regarding 2 cases confirmed in Daegu City, one was identified during the application process of Social Support Project for the Elderly, and the other was tested when admitted to Kyungpook National University Hospital (Chilgok branch) on 8 May due to non-COVID-19 related illness. The case developed a cough on 25 April. Epidemiological investigation is currently underway.

○ According to the administrative order issued on 8 May, nightlife venues, such as clubs and bars, are advised to refrain from operation. If remaining in operation, they should follow infection prevention and control guidelines:

- (1) Wear a facemask
- (2) Keep 1 or 2-meter distance from one another
- (3) Keep a log of visitors and check their temperature and presence of respiratory symptoms at the entrance
- (4) Ventilate and disinfect the space at least twice a day

○ KCDC reminded and urged everyone to comply with 5 Basic Infection Prevention Rules for Everyone:

- (1) Stay home for 3-4 days if you get sick.
- (2) Keep a distance of two arms' length between you and other people.
- (3) Wash your hands for 30 seconds. Cough/sneeze into your sleeve.
- (4) Ventilate your space at least twice a day and disinfect regularly.
- (5) Keep in touch with family and friends even while maintaining physical distancing.

○ KCDC recommends religious communities to utilize non-face-to-face methods of gathering such as online streaming. Religious communities that meet host gatherings on sight need to check people for elevated temperature, maintain distance between people, have people wear facemasks, and refrain from providing meals to eat together or activities that cause respiratory droplets to disperse such as singing or shouting.

○ KCDC reminded the public to stay home and not go to work if having fever or respiratory symptoms and to call the KCDC call center (1339 or area code + 120) or contact a local public health center if having prolonging fever over 38 degrees or aggravating respiratory symptoms.

- KCDC urged people to visit a screening center to get tested especially if two or more persons within a household unit or travel group unit develop COVID-19 suspected symptoms.

[Table 3: Regional distribution and epidemiological links of the confirmed cases]

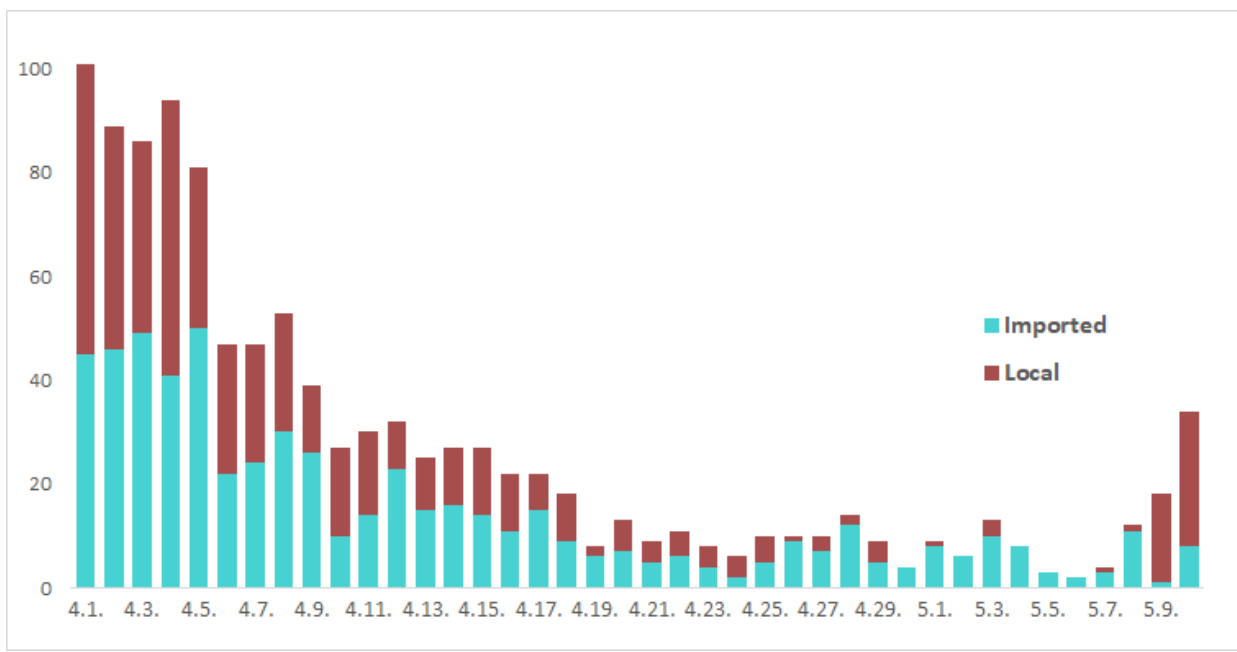
Region	Confirmed cases									Other major clusters
	Total	Imported cases	Clusters					Other*	New cases	
			Sub-total	Shin-cheonji	Other clusters	Contacts of confirmed cases	Imported cases			
Seoul	663	259	381	8	288	16	69	23	14	<b>Itaewon clubs(24)</b> , Guro-gu call center (98), Dong-an Church-PC Cafe (20), Manmin Central Church (41), etc.
Busan	141	27	85	12	54	18	1	29	0	Onchun Church (39), Suyeong-gu Kindergarten (5), etc.
Daegu	6,861	24	6,115	4,510	678	923	4	722	2	Second Mi-Ju Hospital (196), Hansarang Convalescent Hospital (128), Daesil Convalescent Hospital (100), Fatima Hospital (37), etc.
Incheon	101	45	52	2	38	5	7	4	3	<b>Itaewon clubs(4)</b> , Guro-gu call center (20), etc.
Gwangju	30	14	16	9	0	1	6	0	0	
Daejeon	41	11	21	2	11	8	0	9	0	Korea Forest Engineer Institute (3), etc.
Ulsan	44	13	24	16	2	3	3	7	0	
Sejong	46	3	42	1	38	3	0	1	0	Ministry of Oceans and Fisheries (30), gym facilities (8)
Gyeonggi	694	170	480	29	337	52	62	44	6	<b>Itaewon clubs(11)</b> , Grace River Church in Seongnam (72), Guro-gu call center-Bucheon SaengMyeongSu Church (48), Uijeongbu St. Mary's Hospital (50), etc.
Gangwon	53	14	32	17	15	0	0	7	0	Apartments in Wonju City (3), Uijeongbu St. Mary's Hospital (10), etc.
Chungbuk	49	7	34	6	20	6	2	8	2	<b>Itaewon clubs(2)</b> , Goesan-gun Jangyeon-myeon (11)
Chungnam	143	13	120		118	1	1	10	0	Gym facilities in Cheonan (103), research center in Seosan (9), etc.
Jeonbuk	19	10	4	1	3	0	0	5	0	
Jeonnam	16	8	5	1	1	2	1	3	0	
Gyeongbuk	1,366	11	1,224	566	468	190	0	131	0	Cheongdo Daenam Hospital (120), Bonghwa Pureun Nursing Home (68), pilgrimage to Israel (49), Gyeongsan Seo Convalescent Hospital (66), Yecheon-gun (41), etc.
Gyeongnam	117	14	85	32	46	6	1	18	0	Geochang Church (10), Geochang Woongyang-myeon (8), Wings Tower (10), etc.
Jeju	14	8	2	0	1	0	1	4	1	
Airport	476	476	0	0	0	0	0	0	6	
Total	10,874 (100%)	1,127 (10.4%)	8,722 (80.2%)	5,212 (47.9%)	2,118 (19.5%)	1,234 (11.3%)	158 (1.5%)	1,025 (9.4%)	34	

\* Not classified into a cluster or under investigation

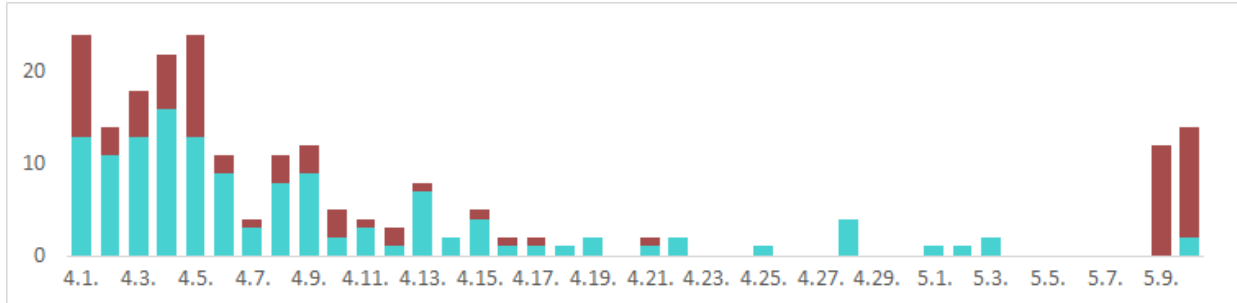
※ The interim classification is based on the reporting location, which may change depending on further epidemiological investigation.

[Figure 1: Daily confirmed cases by chain of transmission]

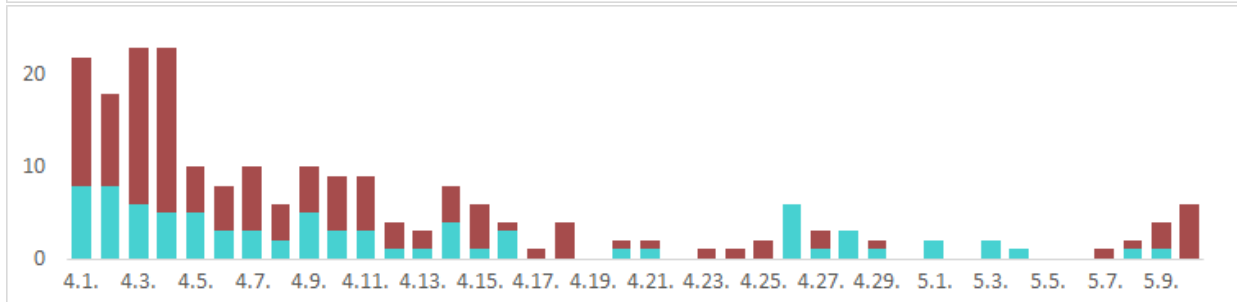
TOTAL



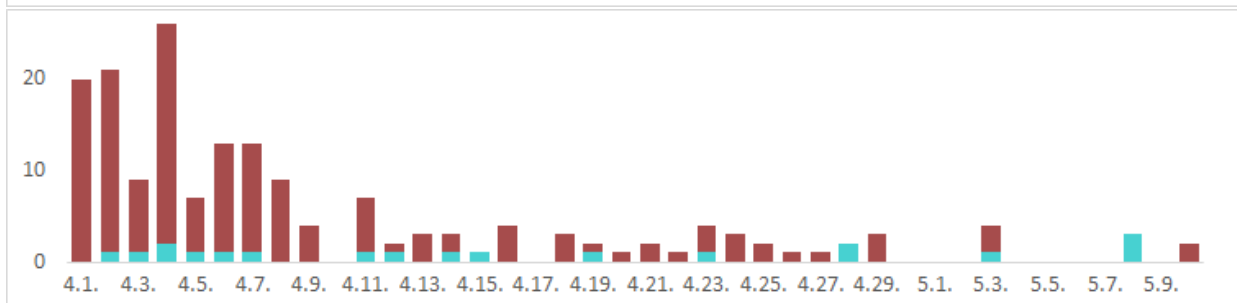
Seoul City



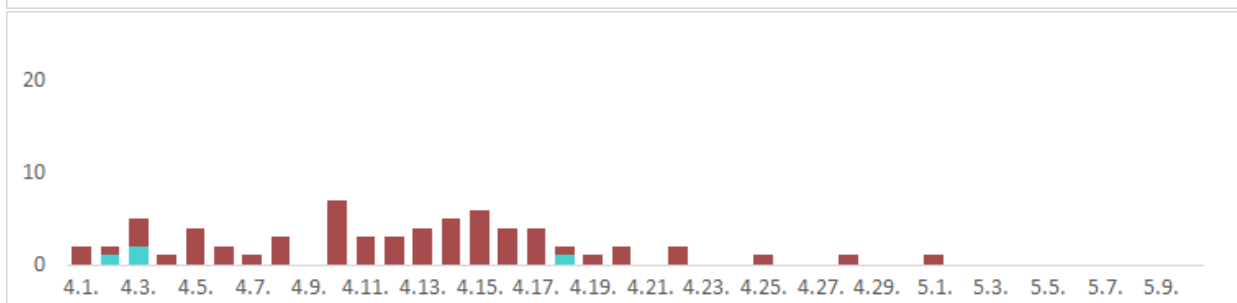
Gyeonggi Province



Daegu City



Gyeongbuk Province



[Table 4: Age distribution of severe cases]

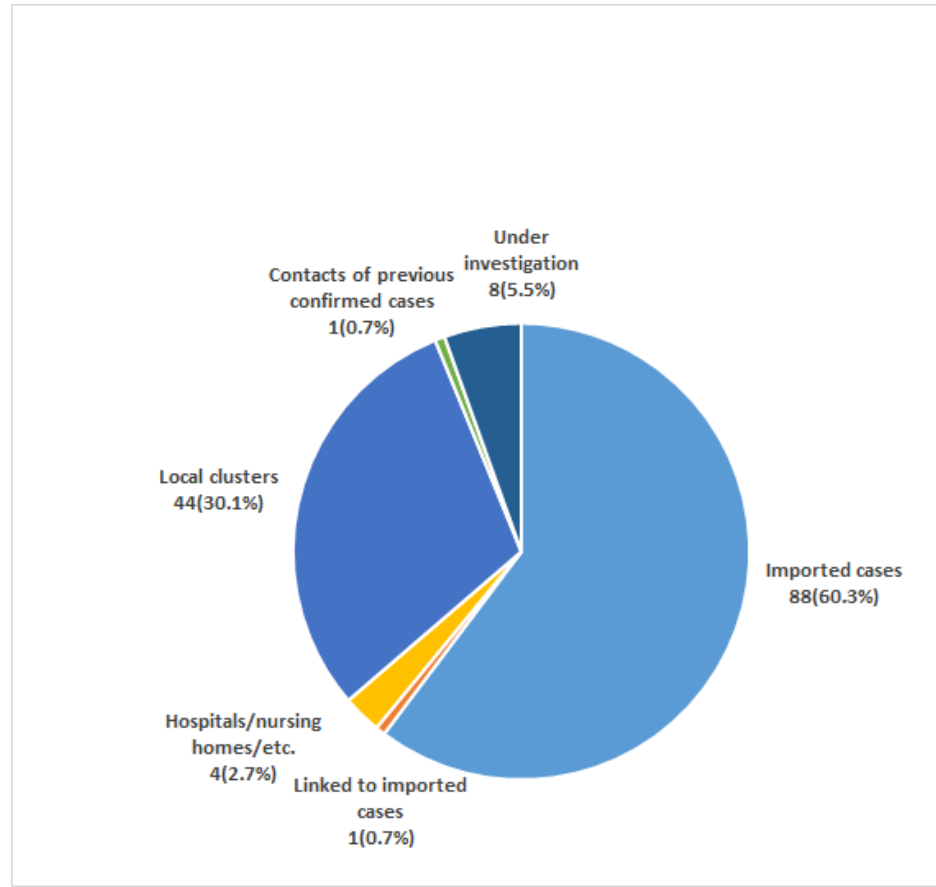
Age group	Total	Severe	( % )	Very severe	( % )
Total	23	5	( 100.0 )	18	( 100.0 )
80 or above	9	2	( 40.0 )	7	( 38.9 )
70-79	8	1	( 20.0 )	7	( 38.9 )
60-69	3	1	( 20.0 )	2	( 11.1 )
50-59	1	1	( 20.0 )	0	( 0.0 )
40-49	2	0	( 0.0 )	2	( 11.1 )
30-39	0	0	( 0.0 )	0	( 0.0 )
20-29	0	0	( 0.0 )	0	( 0.0 )
10-19	0	0	( 0.0 )	0	( 0.0 )
0-9	0	0	( 0.0 )	0	( 0.0 )

[Table 5: Cases tested positive after discharge]

	Total	( % )
Total	382	( 100.0 )
80 or above	31	( 8.1 )
70-79	25	( 6.5 )
60-69	40	( 10.5 )
50-59	66	( 17.3 )
40-49	51	( 13.4 )

30-39	50	( 13.1 )
20-29	91	( 23.8 )
10-19	20	( 5.2 )
0-9	8	( 2.1 )

[Figure 2: New cases (for last 2 weeks) by chain of transmission]



Files

Press Release (May10)\_Afternoon.pdf

[View](#)



This public work may be used under the terms of the public interest source + commercial use prohibition + nonrepudiation conditions

< Prev.

Next. >

List